

HealthStats NSW



Alcohol indicators



www.healthstats.nsw.gov.au

Alcohol attributable deaths

- NSW, trend
www.healthstats.nsw.gov.au/Indicator/beh_alcafdth/beh_alcafdth
- Comparisons (by age, Local Health District, Primary Health Network, remoteness categories and socioeconomic status)
www.healthstats.nsw.gov.au/Indicator/beh_alcafdth/beh_alcafdth_comparison
- By age, trends
www.healthstats.nsw.gov.au/Indicator/beh_alcafdth/beh_alcafdth_age_trend
- By Local Health District and year
www.healthstats.nsw.gov.au/Indicator/beh_alcafdth/beh_alcafdth_lhn_snap
- By Local Health District and year, maps
www.healthstats.nsw.gov.au/Indicator/beh_alcafdth/beh_alcafdth_lhn_map
- By Local Health District, trends
www.healthstats.nsw.gov.au/Indicator/beh_alcafdth/beh_alcafdth_lhn_trend
- By Primary Health Network and year
www.healthstats.nsw.gov.au/Indicator/beh_alcafdth/beh_alcafdth_phn_snap
- By Primary Health Network and year, maps
www.healthstats.nsw.gov.au/Indicator/beh_alcafdth/beh_alcafdth_phn_map
- By Primary Health Network, trends
www.healthstats.nsw.gov.au/Indicator/beh_alcafdth/beh_alcafdth_phn_trend
- By Local Government Area, map
www.healthstats.nsw.gov.au/Indicator/beh_alcafdth/beh_alcafdth_lgamap
- By Local Government Area, trends
www.healthstats.nsw.gov.au/Indicator/beh_alcafdth/beh_alcafdth_lga_trend
- By remoteness and year
www.healthstats.nsw.gov.au/Indicator/beh_alcafdth/beh_alcafdth_aria_snap
- By remoteness, trends
www.healthstats.nsw.gov.au/Indicator/beh_alcafdth/beh_alcafdth_aria_trend
- By socioeconomic status and year
www.healthstats.nsw.gov.au/Indicator/beh_alcafdth/beh_alcafhos_ses
- By socioeconomic status, trends
www.healthstats.nsw.gov.au/Indicator/beh_alcafdth/beh_alcafdth_ses_trend

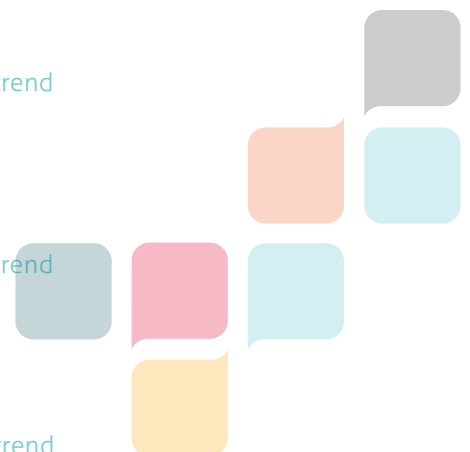
Alcohol attributable hospitalisations

- NSW, trend
www.healthstats.nsw.gov.au/Indicator/beh_alcafhos/beh_alcafhos
- Comparisons (by age, sex, Local Health District, Primary Health Network, remoteness and socioeconomic status)
www.healthstats.nsw.gov.au/Indicator/beh_alcafhos/beh_alcafhos_comparison
- By age and year
www.healthstats.nsw.gov.au/Indicator/beh_alcafhos/beh_alcafhos_age_snap
- By age, trends
www.healthstats.nsw.gov.au/Indicator/beh_alcafhos/beh_alcafhos_age_trend

- By Aboriginality, trends
www.healthstats.nsw.gov.au/Indicator/beh_alcafhos/beh_alcafhos_atsti_trend
- By Local Health District and year
www.healthstats.nsw.gov.au/Indicator/beh_alcafhos/beh_alcafhos_lhn_snap
- By Local Health District, trends
www.healthstats.nsw.gov.au/Indicator/beh_alcafhos/beh_alcafhos_lhn_trend
- By Primary Health Network and year
www.healthstats.nsw.gov.au/Indicator/beh_alcafhos/beh_alcafhos_phn_snap
- By Primary Health Network, trends
www.healthstats.nsw.gov.au/Indicator/beh_alcafhos/beh_alcafhos_phn_trend
- By Local Government Area and year, maps
www.healthstats.nsw.gov.au/Indicator/beh_alcafhos/beh_alcafhos_lgamap
- By Local Government Area, trends
www.healthstats.nsw.gov.au/Indicator/beh_alcafhos/beh_alcafhos_lga_trend
- By remoteness and year
www.healthstats.nsw.gov.au/Indicator/beh_alcafhos/beh_alcafhos_aria_snap
- By remoteness, trends
www.healthstats.nsw.gov.au/Indicator/beh_alcafhos/beh_alcafhos_aria_trend
- By socioeconomic status and year
www.healthstats.nsw.gov.au/Indicator/beh_alcafhos/beh_alcafhos_ses
- By socioeconomic status, trends
www.healthstats.nsw.gov.au/Indicator/beh_alcafhos/beh_alcafhos_ses_trend

Alcohol drinking frequency in adults

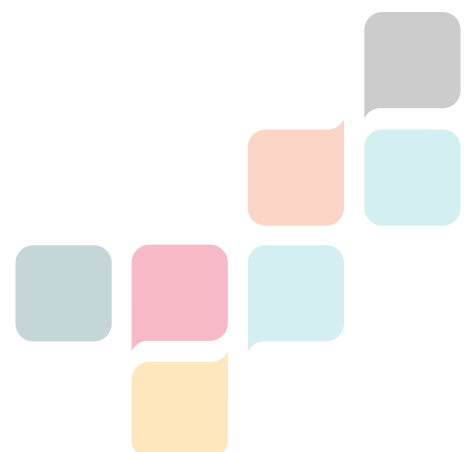
- By category and year
www.healthstats.nsw.gov.au/Indicator/beh_alcfreq/beh_alcfreq
- By category, trends
www.healthstats.nsw.gov.au/Indicator/beh_alcfreq/beh_alcfreq_trend
- By category, stacked trends
www.healthstats.nsw.gov.au/Indicator/beh_alcfreq/beh_alcfreq_areatrend
- Comparisons (by age, sex, Aboriginality, country of birth, Local Health District, Primary Health Network, remoteness categories and socioeconomic status)
www.healthstats.nsw.gov.au/Indicator/beh_alcfreq/beh_alcfreq_comparison
- By age, category and year
www.healthstats.nsw.gov.au/Indicator/beh_alcfreq/beh_alcfreq_age
- By age and category, trends
www.healthstats.nsw.gov.au/Indicator/beh_alcfreq/beh_alcfreq_age_trend
- By Aboriginality, category and year
www.healthstats.nsw.gov.au/Indicator/beh_alcfreq/beh_alcfreq_atsti
- By Aboriginality and category, trends
www.healthstats.nsw.gov.au/Indicator/beh_alcfreq/beh_alcfreq_atsti_trend
- By country of birth, category and year
www.healthstats.nsw.gov.au/Indicator/beh_alcfreq/beh_alcfreq_cob
- By country of birth and category, trends
www.healthstats.nsw.gov.au/Indicator/beh_alcfreq/beh_alcfreq_cob_trend



- By Local Health District, category and year
www.healthstats.nsw.gov.au/Indicator/beh_alcfreq/beh_alcfreq_lhn
- By Local Health District and category, trends
www.healthstats.nsw.gov.au/Indicator/beh_alcfreq/beh_alcfreq_lhn_trend
- By Primary Health Network, category and year
www.healthstats.nsw.gov.au/Indicator/beh_alcfreq/beh_alcfreq_phn
- By Primary Health Network and category, trends
www.healthstats.nsw.gov.au/Indicator/beh_alcfreq/beh_alcfreq_phn_trend
- By remoteness, category and year
www.healthstats.nsw.gov.au/Indicator/beh_alcfreq/beh_alcfreq_aria
- By remoteness and category, trends
www.healthstats.nsw.gov.au/Indicator/beh_alcfreq/beh_alcfreq_aria_trend
- By socioeconomic status, category and year
www.healthstats.nsw.gov.au/Indicator/beh_alcfreq/beh_alcfreq_ses
- By socioeconomic status and category, trends
www.healthstats.nsw.gov.au/Indicator/beh_alcfreq/beh_alcfreq_ses_trend

Alcohol drinking in adults

- NSW, trend
www.healthstats.nsw.gov.au/Indicator/beh_alc_age/beh_alc_age
- Comparisons (by age, Aboriginality, country of birth, Local Health District, Primary Health Network, remoteness categories and socioeconomic status)
www.healthstats.nsw.gov.au/Indicator/beh_alc_age/beh_alc_comparison
- By age and year
www.healthstats.nsw.gov.au/Indicator/beh_alc_age/beh_alc_age_snap
- By age, trends
www.healthstats.nsw.gov.au/Indicator/beh_alc_age/beh_alc_age_trend
- By Aboriginality and year
www.healthstats.nsw.gov.au/Indicator/beh_alc_age/beh_alc_at si
- By Aboriginality, trends
www.healthstats.nsw.gov.au/Indicator/beh_alc_age/beh_alc_at si_trend
- By country of birth group and year
www.healthstats.nsw.gov.au/Indicator/beh_alc_age/beh_alc_cob
- By country of birth group, trends
www.healthstats.nsw.gov.au/Indicator/beh_alc_age/beh_alc_cob_trend
- By Local Health District and year
www.healthstats.nsw.gov.au/Indicator/beh_alc_age/beh_alc_lhn
- By Local Health District, trends
www.healthstats.nsw.gov.au/Indicator/beh_alc_age/beh_alc_lhn_trend
- By Primary Health Network and year
www.healthstats.nsw.gov.au/Indicator/beh_alc_age/beh_alc_phn
- By Primary Health Network, trends
www.healthstats.nsw.gov.au/Indicator/beh_alc_age/beh_alc_phn_trend
- By remoteness and year
www.healthstats.nsw.gov.au/Indicator/beh_alc_age/beh_alc_aria



- By remoteness, trends
www.healthstats.nsw.gov.au/Indicator/beh_alc_age/beh_alc_aria_trend
- By socioeconomic status and year
www.healthstats.nsw.gov.au/Indicator/beh_alc_age/beh_alc_ses
- By socioeconomic status, trends
www.healthstats.nsw.gov.au/Indicator/beh_alc_age/beh_alc_ses_trend

Alcohol drinking in secondary school students

- NSW, trend
www.healthstats.nsw.gov.au/Indicator/beh_alcstud_cat/beh_alcstud_cat
- By age and year
www.healthstats.nsw.gov.au/Indicator/beh_alcstud_cat/beh_alcstud_cat_snap
- By age, trend
www.healthstats.nsw.gov.au/Indicator/beh_alcstud_cat/beh_alcstud_cat_trend
- By Local Health District group and year
www.healthstats.nsw.gov.au/Indicator/beh_alcstud_cat/beh_alcstud_cat_lhn_snap
- By Local Health District group, trend
www.healthstats.nsw.gov.au/Indicator/beh_alcstud_cat/beh_alcstud_cat_lhn_trend

Alcohol problems, presentations to emergency departments

- NSW, trend (monthly)
www.healthstats.nsw.gov.au/Indicator/beh_alcedage/beh_alcedage
- NSW, trend
www.healthstats.nsw.gov.au/Indicator/beh_alcedage/beh_alcedage
- Comparison by age and sex
www.healthstats.nsw.gov.au/Indicator/beh_alcedage/beh_alcedage_comparison
- By age and year
www.healthstats.nsw.gov.au/Indicator/beh_alcedage/beh_alcedage_snap
- By admission status and sex
www.healthstats.nsw.gov.au/Indicator/beh_alcedage/beh_alcedage_adm_snap
- By admission status, trend
www.healthstats.nsw.gov.au/Indicator/beh_alcedage/beh_alcedage_adm_trend
- By triage category and sex
www.healthstats.nsw.gov.au/Indicator/beh_alcedage/beh_alcedage_triage_snap
- By triage category, trend
www.healthstats.nsw.gov.au/Indicator/beh_alcedage/beh_alcedage_triage_trend

Immediate risk alcohol drinking in adults

- By age
www.healthstats.nsw.gov.au/Indicator/beh_alcsor_age/beh_alcsor_age
- By Aboriginality
www.healthstats.nsw.gov.au/Indicator/beh_alcsor_age/beh_alcsor_atssi_snap
- By country of birth group
www.healthstats.nsw.gov.au/Indicator/beh_alcsor_age/beh_alcsor_cob_snap

- By Local Health District
www.healthstats.nsw.gov.au/Indicator/beh_alcsor_age/beh_alcsor_lhn_snap
- By Primary Health Network
www.healthstats.nsw.gov.au/Indicator/beh_alcsor_age/beh_alcsor_phn_snap
- By remoteness
www.healthstats.nsw.gov.au/Indicator/beh_alcsor_age/beh_alcsor_aria_snap
- By socioeconomic status
www.healthstats.nsw.gov.au/Indicator/beh_alcsor_age/beh_alcsor_ses_snap

